

LEAD-LINED PET UNIT DOSE CABINET

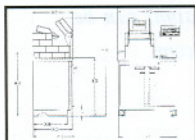


Designed for PET hot labs with limited space, the PET Unit Dose Cabinet provides a space-efficient work area over a fully shielded storage cabinet.

The cabinet supports either the 042-433 Biodex Compact L-Block with Built-in Dose Calibrator Shield, or the 042-440 L-Block with Built-in Dose Calibrator Shield and LCD Display, the 039-412 Sharps Container Shield, the 042-434 Lead Brick Cave, and the 086-250 Atomlab 100 Dose Calibrator. The dose calibrator display unit mounts on a stand above the countertop to maximize work space.

The lower cabinet has key-locking doors, two sliding bottom shelves, and two sliding upper shelves. The bottom shelves will accommodate PET shipping containers. The top shelves conveniently store syringes, syringe shields, and other small items. This cabinet is completely shielded on all six sides with 0.25" lead, and can stand alone or be grouped with other cabinets.

All cabinets in this product line are built to the industry standard height of 36.5". All units include a stainless steel countertop incorporating a 0.5" lip and 4" backsplash. When ordering multiple units for grouped configuration, a unified countertop may be ordered to provide a continuous work surface.



Cabinet drawing dimensions can be accessed at www.biodex.com.

- *Designed for PET hot labs with limited space*
- *Accommodates:*
 - *Compact L-Block Shield with Built-in Dose Calibrator Shield*
 - *PET Sharps Container Shield*
 - *Lead Brick Cave*
 - *Atomlab 100 Dose Calibrator*
- *Sliding shelves for:*
 - *PET shipping containers*
 - *Small items*
- *Lead shielded on all six sides*
- *Key-locked doors*

SPECIFICATIONS:

Dimensions: 36.5" w x 24.75" depth x 36.5" h (93 x 63 x 93 cm)
 Lead Shielding: .25" thick (.64 cm)
 Finish: Powder coat
 Doors: Key-locked
 Countertop: Stainless steel with 4" backsplash and .5" spillproof lip
 Weight Capacity: 1550 lb (703 kg)
 Weight: 1240 lb (562 kg)

244-200 Cabinet, PET, Unit Dose, .25" lead
Does not accommodate Lead Brick Cave

244-205 Cabinet, PET, Unit Dose, .25" lead
Accommodates Lead Brick Cave 042-434

Related:

042-433 L-Block Shield, Compact, 1.5" lead
With built-in Dose Calibrator Shield

042-440 L-Block with Dose Calibrator Shield and LCD Display

042-434 Lead Brick Cave, 3-wall, 2" lead.....

086-250 Dose Calibrator, Atomlab 100, 115 VAC, RS-232 port.....
Includes: Vial/Syringe Dipper and Well Insert

039-412 Sharps Container Shield, PET, 1" lead
Uses one 039-413 Sharps Container

039-413 Sharps Container, 3.2 qt., 30/pkg
Fits 039-412